



Local Control Stations IP66



Hensel Electric India Pvt Ltd
Industrial Electrical Power Distribution Systems

35 Kunnam Village, Sunguvarchathram
Walajabad Road
Sriperumbudur - 631 604
Kanchipuram Dist., Tamil Nadu
INDIA

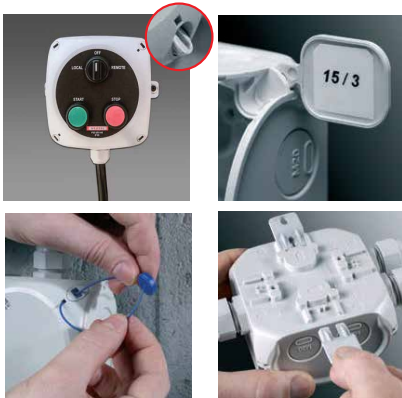
Phone: +91-44-6712 7700
Fax: +91-44-6712 7724
E-Mail: info@hensel-electric.in
www.hensel.in

Follow Us On:





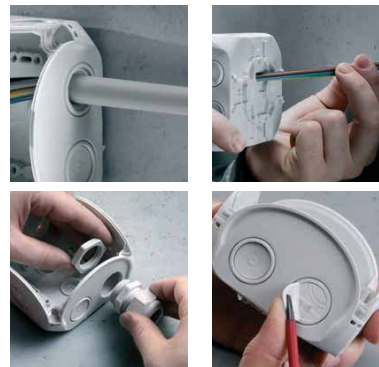
Functional enclosure technology



- Closes quickly by a quarter of turn, closed position is easily visible.
- Integrated sealing option.
- External brackets for fastening are always included. Oblong holes provide easy mounting and adjustment.
- Optional: Professional identification of the circuits at bottom part of box

Various cable entry

Optional: Push-in membrane or screwed cable gland in one go



- Cable entry via integrated elastic membranes in box walls for fast cable entry up to degree IP 66.
- Cable entry through the bottom of the box via integrated elastic membranes.
- Alternatively, a cable gland can be set after removing the elastic membrane.

Technical details

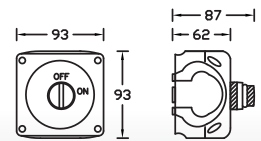
Rated operational current (conforming to IEC/EN60947-5-1)	AC-15: 1.2A 600VAC to 6A 120VAC. DC-13: 0.27A 250VDC to 0.55A 125VDC.
Rated impulse withstand voltage	4 KV
Rated insulation voltage	600V conforming to EN 60947-1
Conforms to	IEC 60947-5-1 & IEC 60947-5-5

Local Control Stations IP66
for normal environment and protected outdoor



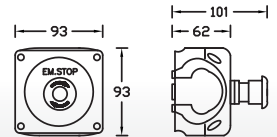
SA 0101- G6

- 1 No - On/Off 2 Position selector switch with 1NO + 1NC



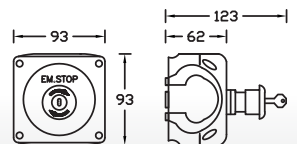
PBS 0101- G6

- 1 No - Mushroom head Emergency Stop PushButton (Red) with 1NC



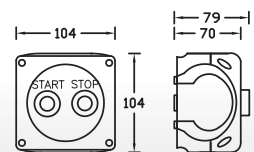
PBS 0101K- G6

- 1 No - Mushroom head Emergency Stop PushButton (Red) with Key and 1NC



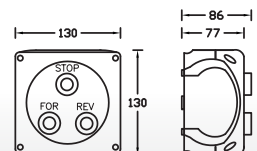
PBS 0201- G6

- 1 No - Start PushButton (Green) with 1NO
- 1 No - Stop PushButton (Red) with 1NC



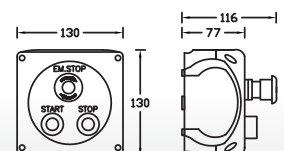
PBS 0301- G6

- 1 No - Forward PushButton (Yellow) with 1NO
- 1 No - Reverse PushButton (Blue) with 1NO
- 1 No - Stop PushButton (Red) with 1NC



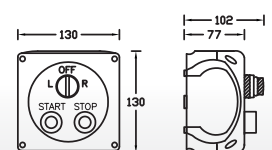
PBS 0401- G6

- 1 No - Start PushButton (Green) with 1NO
- 1 No - Stop PushButton (Red) with 1NC
- 1 No - Mushroom Head Emergency Stop PushButton (Red) with 1NC

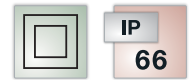


PSS 0201- G6

- 1No - Start PushButton (Green) with 1NO
- 1No - Stop PushButton (Red) with 1NC
- 1No - Local/Off/Remote 3 Position selector switch with 2NO

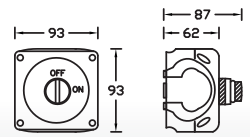


Local Control Stations IP66
Weatherproof and outdoor installations



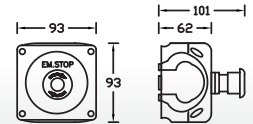
SA 0101- H6 (Grey)
SA 0101 - C6 (Black)

- 1 No - On/Off 2 Position selector switch with 1NO+1NC



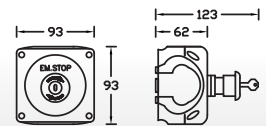
PBS 0101 - H6 (Grey)
PBS 0101 - C6 (Black)

- 1 No - Mushroom Head Emergency Stop PushButton (Red) with 1NC



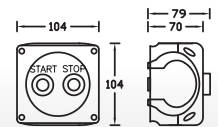
PBS 0101K-H6 (Grey)
PBS 0101K-C6 (Black)

- 1 No - Mushroom Head Emergency Stop PushButton (Red) with key & 1NC



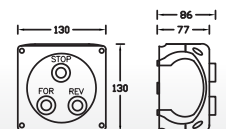
PBS 0201-H6 (Grey)
PBS 0201-C6 (Black)

- 1 No - Start PushButton (Green) with 1NO
- 1 No - Stop PushButton (Red) with 1NC



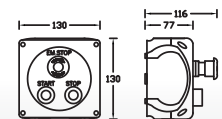
PBS 0301-H6 (Grey)
PBS 0301-C6 (Black)

- 1 No - Forward PushButton (Yellow) with 1NO
- 1 No - Reverse PushButton (Blue) with 1NO
- 1 No - Stop PushButton (Red) with 1NC



PBS 0401-H6 (Grey)
PBS 0401-C6 (Black)

- 1 No - Start PushButton (Green) with 1NO
- 1 No - Stop PushButton (Red) with 1NC
- 1 No - Mushroom Head Emergency Stop PushButton (Red) with 1NC



PSS 0201-H6 (Grey)
PSS 0201-C6 (Black)

- 1No - Start PushButton (Green) with 1NO
- 1No - Stop PushButton (Red) with 1NC
- 1No - Local/Off/Remote 3 Position selector switch with 2NO

